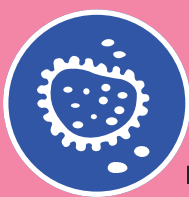


# WALMASTA



## Product Attributes

**Better alternative to cement paints**  
As a water-based exterior emulsion it offers better protection and works as an upgrade from cement paints.



**Anti - fungal**  
Provides reasonable anti - fungal protection.

**Green Pro Certified**  
Validates our effort in striving towards cleaner, more sustainable future.



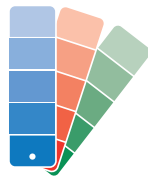
### Product Description

Walmasta is a 100% water-based exterior paint. The paint's formulation with special grade emulsion makes it ideal for use in dry and less humid climatic regions. It has higher resistance to cracking, fading and prevents the growth of fungus on the exterior walls. It is a matt finish paint with a lifespan of 3 years; a better alternative to 1 year life of cement paint.

### Recommended Use

Exterior plastered surfaces, asbestos, concrete blocks, fiberboards.

#### Colour Range



Over 2,000 shades

#### Finish

- HIGH
- MEDIUM
- SMOOTH
- MATT ✓

Matt

#### Toxicity



VOC - 32.9gm/Lt

### Coverage

50 -60 sq.ft/ Lt/2 coats, under ideal test conditions.  
(Coverage may depend on factors like surface conditions, surface preparation, application skill, weather conditions, dilution etc.)

### Recommended Undercoats

**Primer:** For wall/ plastered surfaces – WeatherCoat Exterior Primer / Alternatively, Walmasta diluted using 1 L of water with 1 L of emulsion may be used

**Putty:** For wall/ plastered surfaces – Bison Wall Putty

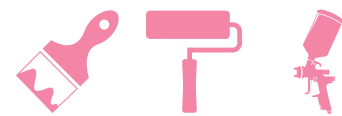
#### Drying Time



**SD:** 25-35 min depending on weather conditions

**HD:** 4 - 6 hours

#### Application Method



Brush/ Roller/ Spray

#### Dilution Ratio



**Brush:** 600 ml of water/1L emulsion  
In case of N Base shades, no dilution is advised to ensure proper colour depth  
**For dark shades only:** Maximum dilution should be 10 – 15 % depending on shade. Coverage may be less compared to light shades.

#### Recommended Thinner



Potable water

#### Gloss Level



10 – 15 at 60° GH when released



# WALMASTA



## Packs



**ColorBank/ Non- ColorBank**  
Pack of 1, 4, 10 and 20 L

**Bases**  
PO, W1, N, N1, N2 and Cream



**Fire Hazard Class**  
Non- flammable



**Pot Life of Thinned Material**  
Overnight

## Surface Preparation



For fresh/ new surfaces: Strip all loose particles from the surface with wire brushing and by scraping, followed by a wipe down. Wash the surface down with water and allow it to dry .



Apply one coat of primer and allow it to dry for 6 – 8 hours.

**For Previously Painted Surfaces:** Strip all the old paint and remove all the loose particles before starting the above process.

## Directions for Application

Dilute the paint as per the recommended dilution ratio. Apply the first finishing coat and allow it to dry for at least 6 -8 hours. After the first coat dries, apply the second coat and allow it to dry overnight.

### Special Note

Before painting, the following things should be checked thoroughly:

- ▶ Ideal moisture content of the wall should be below 12%
- ▶ Ideal pH value of the wall surface should be between 7-11

### Points to Note

- ▶ Shake well before use and do not over dilute
- ▶ Strain the material through a fine sieve before use
- ▶ Keep the container tightly closed to prevent drying
- ▶ Scrape off old paint thoroughly before painting starts
- ▶ Gyro shake well after tinting through CB Machine
- ▶ Do not apply paint on lime washed surfaces or damp wall
- ▶ Keep out of reach of children and away from foodstuff
- ▶ In case of contact with eyes, wash immediately with water and seek medical help

### BERGER PAINTS INDIA LIMITED